



# 11500 MODULE

## INSTALLATION GUIDE

— 2006–2009 —

C7 & C9

7.2L & 8.8L CAT ENGINES

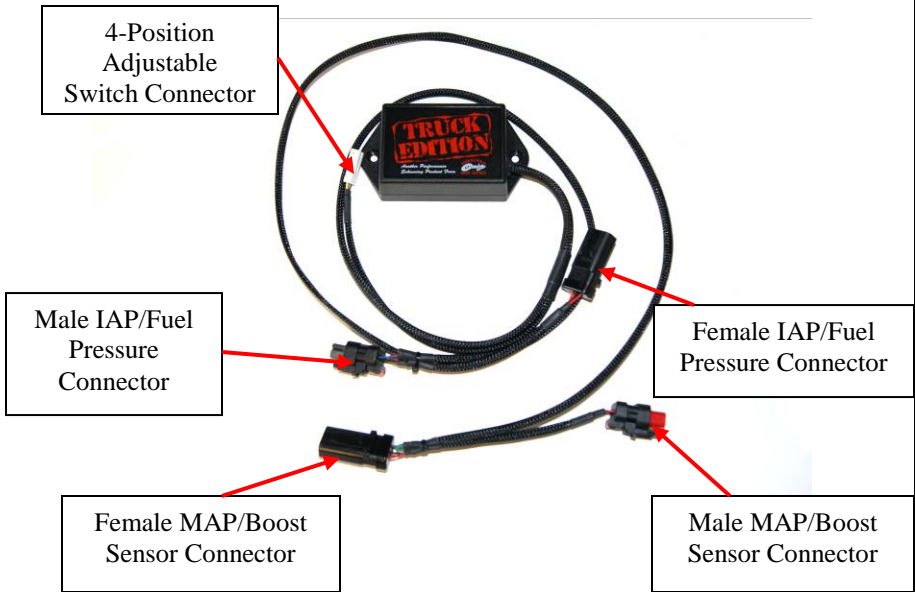
UP TO 30% HP GAIN  
10–20% FUEL SAVINGS



[AGDIESELSOLUTIONS.COM](http://AGDIESELSOLUTIONS.COM)

You Tube 

## 11500 – C7/C9 Cat Module



**For Tech Support Please Call  
1.812.618.9168 or 1.855.343.7680**

Position 1 - Stock - 0HP Gain  
Position 2 - Low - Up to 10% HP  
Position 3 - Med - Up to 20% HP  
Position 4 - High - Up to 30% HP  
Adjustable on the Fly  
Position 1 - Switch to Far Left  
Position 4 - Switch to Far Right



Module Switch can be ran inside the cab for easy performance adjustment  
Module Switch can be secured in engine bay if desired  
Module will default to HIGH setting if Switch is not connected

**\*NOTE: Do not change performance settings while vehicle under excessive load\***

**\*NOT FOR USE IN CALIFORNIA\***

**\*MODULE DOES NOT BYPASS, DELETE OR DEFEAT ANY EMISSION CONTROL SYSTEMS\***

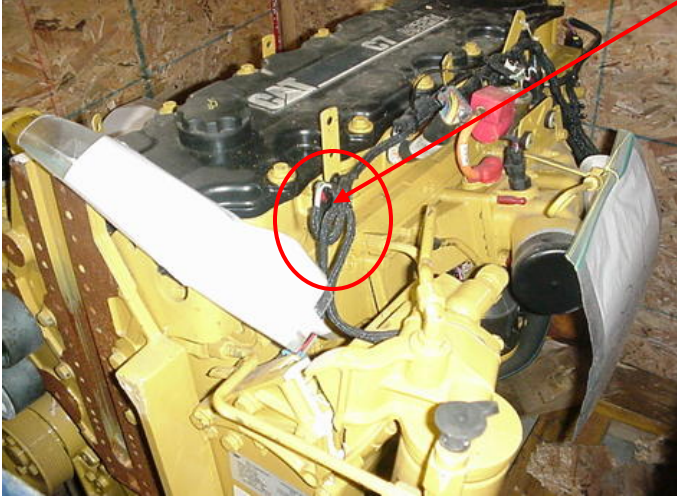
**\*If installation assistance is needed, Ag Diesel Solutions is not responsible for any cost associated with third party instalaltion\***

# 2006-09 C7 (7.2L) & C9 (8.8L) CAT

## Engine Instructions

- 1) Locate the Fuel Pressure/IAP sensor as shown in the picture below and in the diagram on Page 2. Disconnect the Fuel Pressure/IAP Sensor. Depending on your application, the Fuel Pressure and MAP sensors may be in a different location than shown below.

**Note: The stock Fuel Pressure/IAP Sensor will usually have White, Green and Brown wires coming out of the connector.**



- 2) Plug the Male Connector from module into Fuel Pressure Sensor.  
**Note: On the Module harness, the Fuel Pressure connectors are located closest to the Performance Module.**

- 3) Connect the Stock CAT connector to the Female Connector from the module.

**Note: Make sure to push completely together until the connector snaps.**



- 4) Locate the Map sensor on the Intake Manifold on the driver's side of the engine. Refer to the diagram on Page 2 for approximate location.

**Note: The MAP sensor will usually have White, Green and Pink wires coming out of the connector.**



- 5) Disconnect the MAP Sensor and plug the Male plug from the module into the stock MAP/Boost Sensor.

**Note: On the module harness, the Map/Boost connectors are located at the end of the Performance module harness or furthest away from the module.**

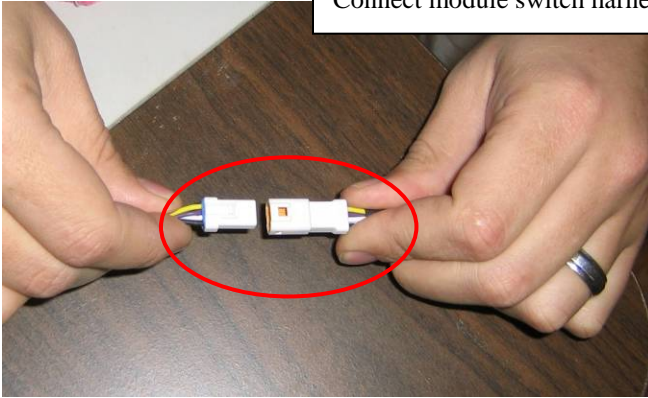
- 6) Plug the Stock CAT MAP sensor connector into the Female Map sensor plug on the module harness.





- 7) Route Switch through firewall and plug into module as shown

Connect module switch harness



- 8) Mount the module in a safe location using the supplied wire ties. Secure the module away from any excessive heat and moving parts.





For Tech Support  
Please Call  
1.812.618.9168 or 1.855.343.7680

**THIS IS A HIGH PERFORMANCE PRODUCT. USE AT YOUR OWN RISK.**

Do not use this product until you have carefully read the following agreement. This sets forth the terms and conditions for the use of this product. The installation of this product indicates that the BUYER has read and understands this agreement and accepts its terms and conditions

**DISCLAIMER OF WARRANTY AND LIMITATION OF LIABILITY**

Power Systems Innovations, Inc and its successors, distributors, jobbers, and dealers (hereafter "SELLER") shall in no way be responsible for the product's proper use and service. It is the installer's responsibility to check for proper installation and if in doubt, contact the manufacturer. The SELLER assumes no liability regarding the improper installation or misapplication of its products. BUYER ACKNOWLEDGES IT HAS HAD THE OPPORTUNITY TO FULLY INSPECT THE PRODUCT. ACCORDINGLY, BUYER ACKNOWLEDGES THAT THE PRODUCT IS BEING SOLD IN "AS IS/WHERE IS" CONDITION AND WITH ALL FAULTS. EXCEPT AS OTHERWISE PROVIDED HEREIN, THERE ARE NO EXPRESS WARRANTIES WITH RESPECT TO THE GOODS, AND ALL IMPLIED WARRANTIES, INCLUDING BUT NOT LIMITED TO, IMPLIED WARRANTIES OF FITNESS FOR A PARTICULAR PURPOSE AND MERCHANTABILITY ARE LIKEWISE HEREBY EXPRESSLY AND FULLY DISCLAIMED. SELLER SHALL NOT BE HELD LIABLE FOR SPECIAL, INDIRECT, INCIDENTAL OR CONSEQUENTIAL DAMAGES OF ANY NATURE WITH RESPECT TO THE PRODUCTS (INCLUDING, WITHOUT LIMITATION, LOST PROFITS, LOST SALES, LOSS OF PRODUCTION, PROPERTY DAMAGE, PERSONAL INJURY OR LOSS OR DAMAGE RESULTING FROM INTERRUPTION OR FAILURE IN OPERATION OF THE PRODUCTS) AND BUYER HEREBY EXPRESSLY WAIVES AND DISCLAIMS ALL SUCH LIABILITY CLAIMS. THE BUYER ACKNOWLEDGES AND AGREES THAT THE DISCLAIMER OF LIABILITY CONTAINED HEREIN IS A MATERIAL TERM OF THE SALE OF THE PRODUCT AND, TO THE FULLEST EXTENT PERMITTED BY LAW, BUYER SHALL DEFEND, INDEMNIFY AND HOLD SELLER HARMLESS FROM ANY AND ALL CLAIMS, DEMANDS, CAUSES OF ACTION, CONTROVERSIES, LIABILITIES, FINES, LOSSES, COSTS AND EXPENSES (INCLUDING, BUT NOT LIMITED TO ATTORNEYS' FEES, EXPERT WITNESS EXPENSES AND LITIGATION EXPENSES) ARISING FROM OR RELATED TO SELLER'S PRODUCTS.

**LIMITED LIFETIME WARRANTY**

Power Systems Innovations, Inc (hereafter "SELLER") warrants that the product supplied shall conform to SELLER's specifications and shall be free from defects in design, material or workmanship for the life of the original BUYER. This Warranty shall not be extended, transferred, assigned or varied except by a written instrument signed by SELLER and BUYER. Products that have been returned to SELLER during the warranty period and accompanied by a dated proof of purchase receipt, with shipping and handling paid by the BUYER, and found to be defective in design, material or workmanship, in SELLER's sole discretion, may be repaired or replaced at SELLER's option and cost. All warranty claims hereunder are subject to approval by SELLER upon examination of the product. If the product is found not to be defective by SELLER, the product may be returned to BUYER at BUYER'S cost. Under no circumstances shall the SELLER be liable for any labor charged or travel time incurred in diagnosis for defects, removal, or reinstallation of this product, or any other expenses. This warranty is void on any products that show evidence of misapplication, negligence, improper installation, abuse, lack of proper maintenance or alteration from its original design.

IN THE EVENT THAT THE BUYER DOES NOT AGREE WITH THIS AGREEMENT: THE BUYER MAY PROMPTLY RETURN THIS PRODUCT, IN A NEW AND UNUSED CONDITION, WITH A DATED PROOF OF PURCHASE, TO THE PLACE OF PURCHASE WITHIN THIRTY (30) DAYS FROM DATE OF PURCHASE FOR A FULL REFUND. THE INSTALLATION OF THIS PRODUCT INDICATES THAT THE BUYER HAS READ AND UNDERSTANDS THIS AGREEMENT AND ACCEPTS ITS TERMS AND CONDITIONS.

# AGRICULTURE



Up to 30% Horsepower Increase  
10-20% Fuel Savings  
Does NOT Flash Factory ECM  
Does NOT Void Equipment Warranty  
Plug and Play Installation  
LIFETIME WARRANTY

# CONSTRUCTION



Up to 30% Horsepower Increase  
10-20% Fuel Savings  
Does NOT Flash Factory ECM  
Does NOT Void Equipment Warranty  
Plug and Play Installation  
LIFETIME WARRANTY

# TRUCK EDITION: LIGHT DUTY



Up to 90 Horsepower Increase  
1-3 MPG Fuel Savings  
Does NOT Flash Truck ECM  
Does NOT Void Factory Warranty  
Plug and Play Installation  
LIFETIME WARRANTY

# TRUCK EDITION: MED, HEAVY DUTY



Up to 30% Horsepower Increase  
5-15% Fuel Savings  
Does NOT Flash Truck ECM  
Does NOT Void Factory Warranty  
Plug and Play Installation  
LIFETIME WARRANTY

LEARN MORE: [AGDIESELSOLUTIONS.COM](http://AGDIESELSOLUTIONS.COM)

You Tube

